

NOVA 1.3 funciones de costes

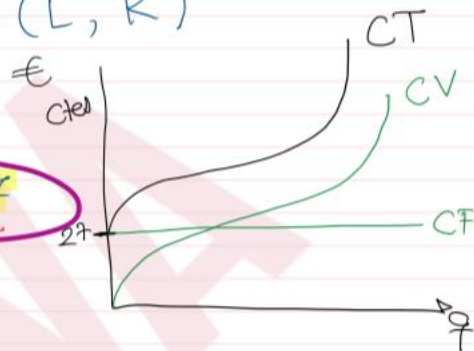
¿Qué es corto plazo?

Período de tiempo en el que no puedo cambiar algo.

f^{on} de producción $\rightarrow q = f(L, \bar{K})$

$$CT = CV + CF$$

$$CT = \underbrace{q^3 - 9q^2 + 18q}_{CV} + \underbrace{27}_{CF}$$



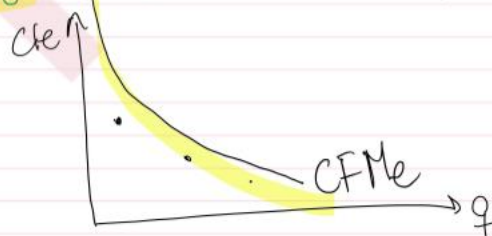
$$CTMe = \frac{CT}{q} = CVMe + CFMe$$

$$CVMe = \frac{CV}{q}$$

$$CVMe = q^2 - 9q + 18$$

$$CFMe = \frac{CF}{q}$$

$$CFMe = \frac{27}{q}$$

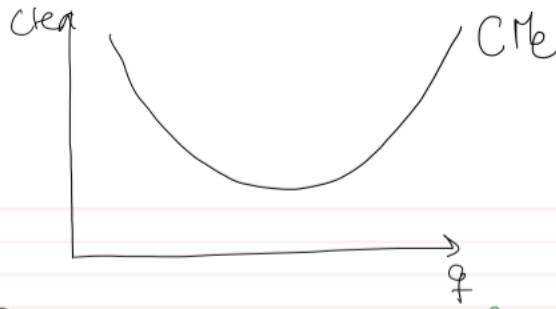


$$CTMe = q^2 - 9q + 18 + \frac{27}{q}$$

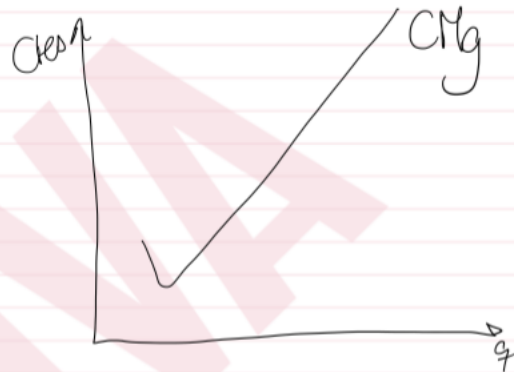
NOVA

NOVA

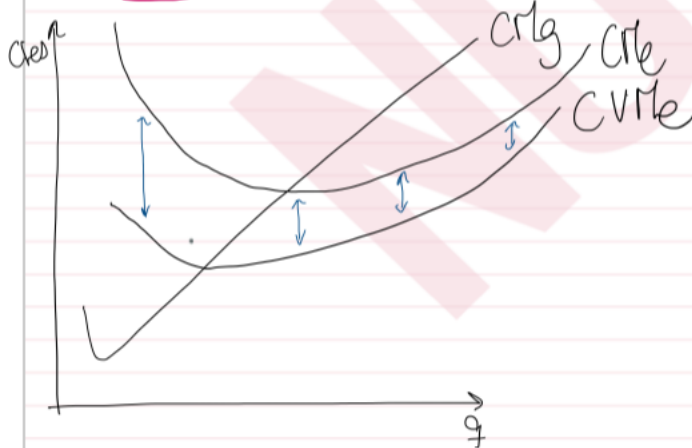
$$CM_e = \frac{CT}{q}$$



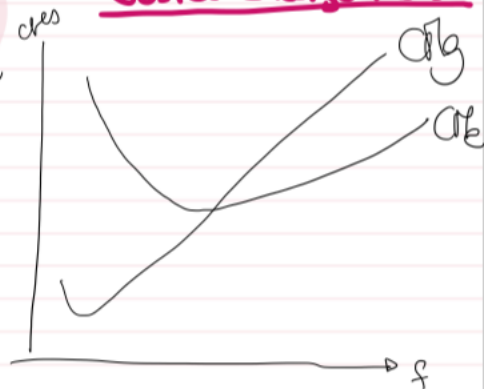
$$CM_g = \frac{\partial C}{\partial q} = dCT = 3q^2 - 18q + 18$$



Costes a Corto Plazo



Costes a largo Plazo



NOVA



Carrer Joan Obiols 11-13
08034 Barcelona



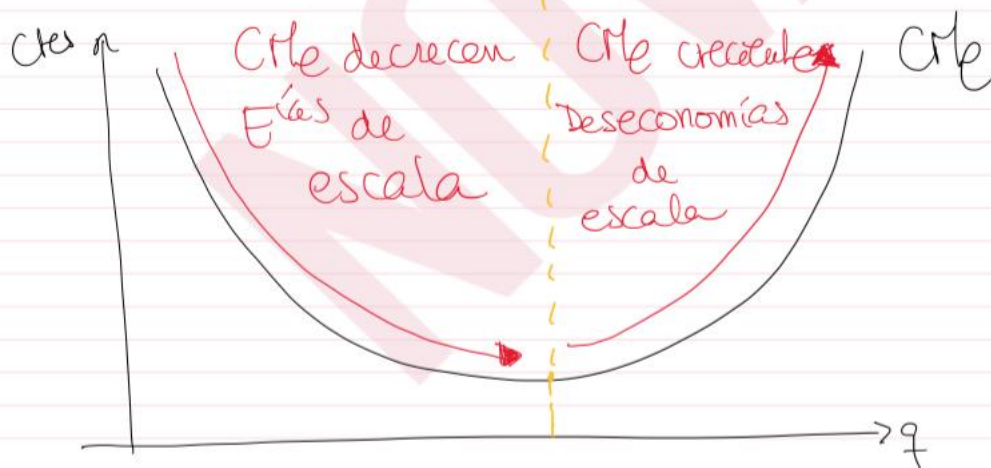
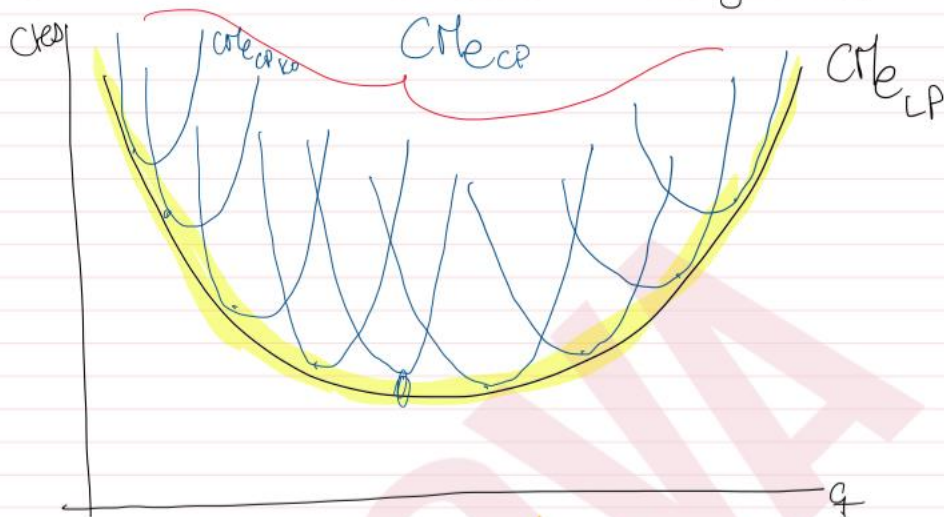
www.academianovaonline.com



Tel: 93 611 17 82
WhatsApp: 671 227 416

NOVA

Relación entre los CM_e a CP y LP



fin de la clase 2: funciones de Costes

NOVA



Carrer Joan Obiols 11-13
08034 Barcelona



www.academianovaonline.com



Tel: 93 611 17 82
WhatsApp: 671 227 146